

Pacific States Marine Fisheries Commission

John Day Dam Condition Monitoring Weekly Report, #22-2

Report Period: 4/9 – 4/15, 2022

Project Leader: Rick Martinson

Prepared By: Gregory Kovalchuk and Aaron Young



SECTION 1. River Flow and Sampling Results

	Min	Max	Mean		
			Current	Last Week	2021
A. River Flow	131.2	172.9	155.9	172.8	135.5
B. Powerhouse 1	74.8	97.6	89.0	171.8	88.3
C. Powerhouse 2	0.0	0.0	0.0	0.0	0.0
D. Spill (kcfs)	55.0	76.3	65.7	0.0	46.2
% of River Flow	39.1	45.7	42.1	0.0	35.0
E. Water Temp *	47.5	47.7	47.6	47.4	48.0
F. % Saturation *	101.1	104.4	102.4	103.3	104.5

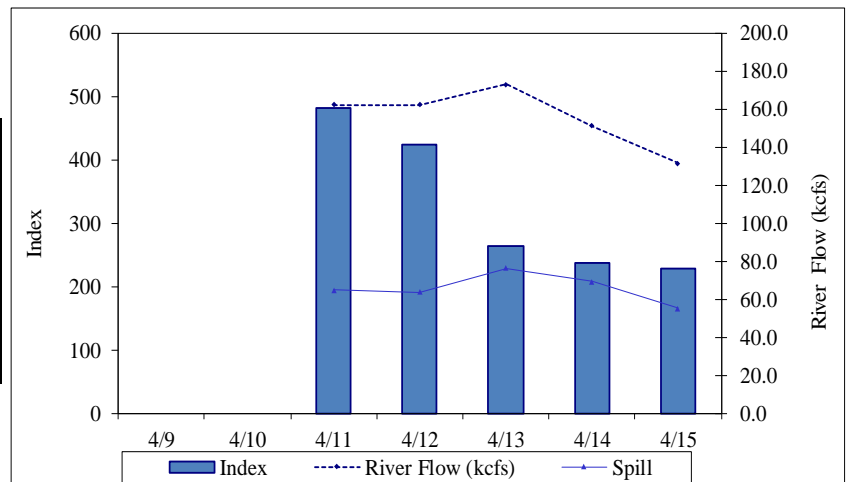
* TDG data from USGS forebay sensor, water temp from lab and USGS sensor.

% SAMPLE COMPOSITION		This Week	Last Week
YEARLING CHINOOK		82.0%	87.8%
SUBYEARLING CHINOOK		0.0%	0.0%
CHINOOK FRY		0.0%	0.0%
UNCLIPPED STEELHEAD		1.6%	2.6%
CLIPPED STEELHEAD		16.4%	9.3%
COHO		0.0%	0.3%
COHO FRY		0.0%	0.0%
SOCKEYE		0.0%	0.0%

YEARLING CHINOOK							SUBYEARLING CHINOOK					COHO				
End Date	Sample Rate	# Smpld	% Desc	% Mort	# Coll	Index	# Smpld	% Desc	% Mort	# Coll	Index	# Smpld	% Desc	% Mort	# Coll	Index
4/9																
4/10																
4/11	44.5%	103	1.9	0.0	236	394	0	0.0	0.0	0	0	0	0.0	0.0	0	0
4/12	47.3%	106	1.9	0.9	220	363	0	0.0	0.0	0	0	0	0.0	0.0	0	0
4/13	94.0%	104	1.0	0.0	111	200	0	0.0	0.0	0	0	0	0.0	0.0	0	0
4/14	92.2%	102	2.9	0.0	108	201	0	0.0	0.0	0	0	0	0.0	0.0	0	0
4/15	100.0%	106	1.9	0.0	106	184	0	0.0	0.0	0	0	0	0.0	0.0	0	0
Weekly		521	1.9	0.2	781	1,341	0	0.0	0.0	0	0	0	0.0	0.0	0	0
Season to date		1,213	1.4	0.1	3,672	4,232	0	0.0	0.0	0	0	2	0.0	0.0	6	6

UNCLIPPED STEELHEAD							CLIPPED STEELHEAD					SOCKEYE				
End Date	Sample Rate	# Smpld	% Desc	% Mort	# Coll	Index	# Smpld	% Desc	% Mort	# Coll	Index	# Smpld	% Desc	% Mort	# Coll	Index
4/9																
4/10																
4/11	44.5%	3	0.0	0.0	6	10	22	18.2	0.0	46	77	0	0.0	0.0	0	0
4/12	47.3%	1	0.0	0.0	2	3	14	0.0	0.0	34	56	0	0.0	0.0	0	0
4/13	94.0%	5	0.0	0.0	5	9	29	10.3	0.0	30	54	0	0.0	0.0	0	0
4/14	92.2%	1	0.0	0.0	1	2	14	7.1	0.0	18	33	0	0.0	0.0	0	0
4/15	100.0%	0	0.0	0.0	0	0	25	4.0	0.0	25	43	0	0.0	0.0	0	0
Weekly		10	0.0	0.0	14	24	104	8.7	0.0	153	264	0	0.0	0.0	0	0
Season to date		28	3.6	0.0	89	99	166	7.8	0.0	452	563	0	0.0	0.0	0	0

TOTAL						
End Date	Sample Rate	# Smpld	% Desc	% Mort	# Coll	Index
4/9						
4/10						
4/11	44.5%	128	4.7	0.0	288	481
4/12	47.3%	121	1.7	0.8	256	422
4/13	94.0%	138	2.9	0.0	146	263
4/14	92.2%	117	3.4	0.0	127	236
4/15	100.0%	131	2.3	0.0	131	227
Weekly		635	3.0	0.2	948	1,629
Season to date		1,409	2.2	0.1	4,219	4,900



Notes: Condition percentages are calculated from sample numbers.
Subyearling chinook and coho include fry.

Western Brook

	Macrophthalmia			Ammocoetes			Ammocoetes		
End Date	# Smpld	% Mort	# Coll	# Smpld	% Mort	# Coll	# Smpld	% Mort	# Coll
4/9									
4/10									
4/11	1	0.0	2	0	0.0	0	0	0	0
4/12	1	0.0	2	0	0.0	0	0	0	0
4/13	1	0.0	1	1	0.0	2	0	0	0
4/14	1	0.0	1	0	0.0	0	0	0	0
4/15	1	0.0	1	0	0.0	0	0	0	0
Weekly	5	0.0	7	1	0.0	2	0	0	0
Season to date	12	0.0	37	1	0.0	2	0	0	0

SECTION 2. Smolt and Lamprey Condition Monitoring Summary

		Yearling Chinook		Subyearling Chinook		Unclipped Steelhead		Clipped Steelhead		Coho		Sockeye	
		This Week	Last Week	This Week	Last Week	This Week	Last Week	This Week	Last Week	This Week	Last Week	This Week	Last Week
SAMPLE #		520	585	0	0	10	17	104	62	0	2	0	0
DESCALING	3-19%	3.1%	3.8%			20.0%	11.8%	5.8%	6.5%				
	>20%		0.5%										
	Pred. Desc.	1.9%	0.5%				5.9%	8.7%	6.5%				
INJURY	BODY	1.2%	1.4%			10.0%		1.9%		50.0%			
	EYE		0.2%										
	HEAD	0.2%											
	OPERC.								1.6%				
	FIN	1.2%	0.3%			11.8%		1.0%	1.6%				
POPEYE	0.2%												
OTHER CONDITIONS	PINK FIN												
	Fin Discolor.												
	FIN HEM.	0.4%						1.0%					
DISEASE	Columnaris							1.0%					
	FUNGUS	0.8%	0.5%					3.8%	1.6%				
	BKD	0.2%											
	PARASITES					11.8%			1.6%				
	DEFORMITY	0.4%						1.0%					
EYE HEM.	0.2%	0.2%											
PREDATION	BIRD	0.6%	0.7%				5.9%	8.7%	11.3%				
	FISH	1.5%	0.5%				5.9%	2.9%					
	LAMPREY												
	OTHER												
end dates		4/15	4/8										

			INJURY					DISEASE and OTHER CONDITIONS					PREDATION	
MP- Macrophthalmia This Week Last Week	End Date	SAMPLE #	BODY	EYE	HEAD	FIN	POPEYE	FIN HEM	Columnaris	FUNGUS	DEFORMITY	EYE HEM.	BIRD	FISH
	4/15	5												
	4/8	6												
AP - Ammocoetes This Week Last Week		SAMPLE #												
	4/15	1												
	4/8	0												

SECTION 3. Incidental Summary

	Bass Largemouth	Bass Smallmouth	Bluegill and Pumpkinseed	Bullhead	Carp	Catfish, Channel	Chiselmouth	Crappie species
This Week	0	1	0	0	0	0	0	2
Season to Date	0	1	0	0	0	0	0	3

	Dace - Longnose	Dace - Speckled	Chinook Jack	Kokanee	Lamprey Adult	Northern Pikeminnow	Peamouth	Perch Yellow
This Week	0	0	0	0	0	0	0	52
Season to Date	0	0	0	0	0	0	0	111

	Redside Shiner	Sand Roller	Sculpin species	Stickleback 3 spine	Sucker species	Shad Adult	Shad Juvenile	Sturgeon White
This Week	0	0	3	0	0	0	0	0
Season to Date	0	0	7	2	0	0	0	0

	Trout Bull	Trout Cutthroat	Trout Rainbow	Walleye	Whitefish Mountain	Siberian Prawn	Chum Salmon	Other/Not Listed
This Week	0	0	0	2	0	7	0	0
Season to Date	0	0	0	2	0	42	0	0

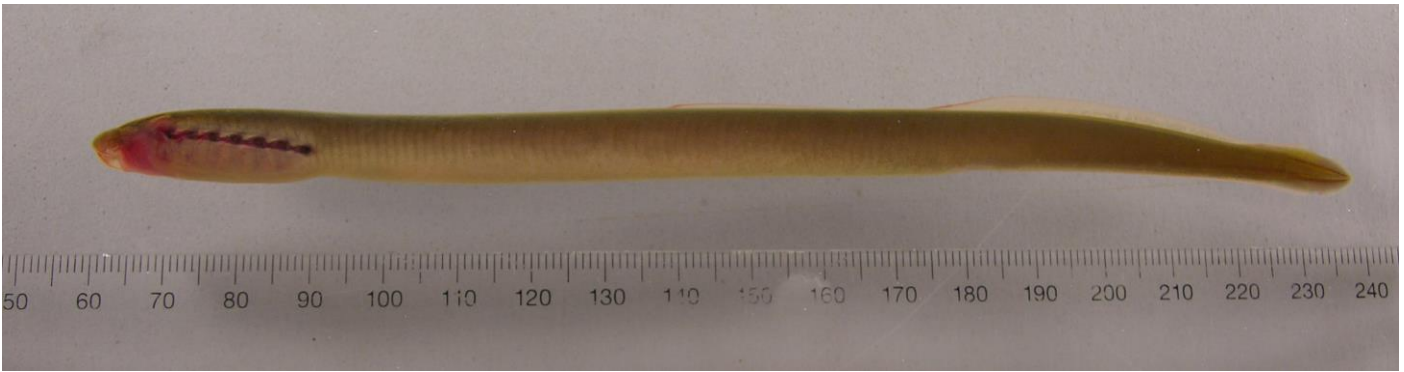
SECTION 4. Facility Operations

Condition Monitoring at John Day Dam is scheduled to sample Monday through Friday until early June. Samples will be taken from the Juvenile Bypass System between 0700 and 1300 hrs. and the Condition Exams will target approximately 100 of the predominant species of out-migrant. Debris at the separator bars and in the sample holding tank was moderate for week and consisted of sticks, plastic, and pieces of terrestrial vegetation.

SECTION 5. Research

Genetic fin clip samples were taken from 5 Pacific Lamprey macrophthalmia and one Pacific lamprey ammocoete for the Columbia River Inter-Tribal Fish Commission during this report period.

SECTION 6. Pictures



Pacific lamprey (*Entosphenus tridentatus*) ammocoete, sampled on 13 April, 2022 at the John Day Dam Smolt Facility.



Yearling Chinook (*Oncorhynchus tshawytscha*) smolt showing signs of Bacterial Kidney Disease (bloated abdomen and eye hemorrhaging), sampled on 13 April, 2022 at the John Day Dam Smolt Facility.